

INDUSTRIAL SHOCK ABSORBERS POWERSTOP

THREAD M06X0.5

► SERIES

PowerStop®

MINI ENERGY



The slender

- **Mini Energy pressure max. (abs.)** 10 [bar] ► **Force in end position max.** 0.5 [kN]
- **Angle of Impact max.** 2 [°] ► **Material** Stainless steel
- **Max. piston return time** 0.15 [s] ► **Material fixed stop** Ecobross
- **Permitted temperature range** -10 ... +70 [°C] ► **PWIS-free** Yes
- **Organic oil (biodegradable)** H1-certified ► **RoHS compliant** Yes
- **Locknut tightening torque max.** 2 [Nm] ► **REACH compliant** Yes

► TECHNICAL DATA

Design	Series	Thread	Stroke variant	Stroke [mm]	Hardness degree	Impact velocity		Energy absorption max.			Protection	Return force		Head	Version
						min.	max.	per stroke	per hour	per stroke		min.	max.		
MINI ENERGY	P	ME	06X05	N	5	H	0,1	1,2	1,8	5.000	1,8	D	1,5	2,5	D
						M	0,8	2,2	1,8	5.000	1,8	A	1,5	2,5	-A
						S	1,8	3,5	1,8	5.000	1,8	A	1,5	2,5	S

► HOW TO ORDER CORRECTLY

P ME 06X05 N S D S -A



Product finder

- Calculate shock absorbers quicker
- Clearly arranged selection guide
- Smart solution – available on mobile devices

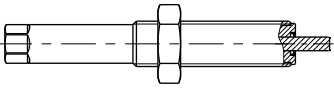
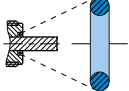
www.zimmer-group.de/en/pdti

Example order no.

PowerStop Mini Energy 06X05

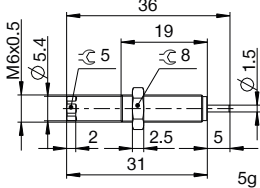
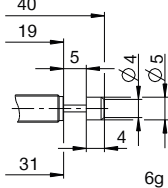
- Stroke variant: standard (N)
- Hardness degree: soft (S)
- Protection: without (D)
- Head: steel head (S)

► PROTECTION

no protection	Wiper (NBR)
D -A	A -A
	
in a clean environment	against liquid, oil, ...

► TECHNICAL DRAWINGS – STANDARD STROKE

N -A

	no head	with steel head
	D -A	S -A
MINI ENERGY		



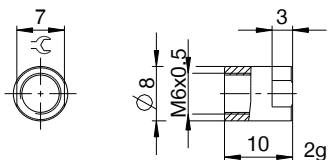
INDUSTRIAL SHOCK ABSORBERS POWERSTOP

THREAD M06X0.5

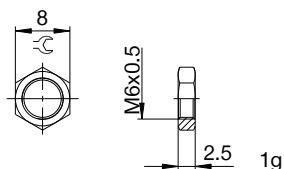
▶ ACCESSORIES

Pos.	Order no.	Accessories	Remarks
①	PAH06X05-A	Stop sleeve	Including 1x PVM06X05-A
②	PVM06X05-A	Stainless steel locknut	Included with the industrial shock absorber.
③	PDD06X05-A	Pressure chamber seal	Recommended fixation with PVM06X05-A. Seal must be in full contact on both sides.

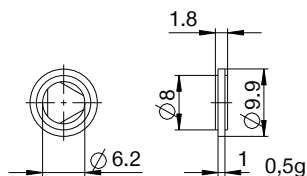
①



②



③



▶ CLASSIFICATION

P ME 06X05 N S D S -A

Design

P Industrial shock absorbers PowerStop

Series

ME Mini Energy

SE Standard Energy

HE High Energy

AE Adjustable Energy

Thread

06 Thread nominal diameter

X

05 Thread pitch (factor 10)

Stroke variant

N Standard stroke

L Long stroke

V Extra long stroke

Hardness degree

H Hard (0.1 - 1.2 m/s; Adjustable Energy: 0.1 - 5 m/s)

M Medium (0.8 - 2.2 m/s)

S Soft (1.8 - 3.5 m/s)

W Supersoft (3 - 5 m/s)

Protection

D no protection

F Felt ring

A Wiper (NBR)

B Bellow (TPE)

Head

D no head

S with steel head

K with plastic head

Version

-A Versioning from a to z