

INDUSTRIAL SHOCK ABSORBERS POWERSTOP

THREAD M14X1.5

► SERIES

PowerStop



- | | | | |
|--|---------------------|----------------------------------|------------------------|
| ► Standard Energy pressure max. (abs.) | 1 [bar] | ► Locknut tightening torque max. | 20 [Nm] |
| ► High Energy pressure max. (abs.) | 10 [bar] | ► Force in end position max. | 3.5 [kN] |
| ► Adjustable Energy pressure max. (abs.) | 10 [bar] | ► Material | Stainless steel |
| ► Angle of Impact max. | 2 [°] | ► Material fixed stop | Aluminum nickel plated |
| ► Max. piston return time | N: 0.2 / L: 0.4 [s] | ► PWIS-free | Yes |
| ► Permitted temperature range | -10 ... +70 [°C] | ► RoHS compliant | Yes |
| ► Organic oil (biodegradable) | H1-certified | ► REACH compliant | Yes |

► TECHNICAL DATA

	Design	Series	Thread	Stroke variant	Stroke [mm]	Hardness degree	Impact velocity			Energy absorption max.			Protection	Return force		Head	Version
							Impact velocity		Continuous operation		Emergency stop operation	min.		max.			
							min.	max.	per stroke	per hour	per stroke	[N]		[N]			
STANDARD ENERGY	P	SE	14X15	N	12	H	0,1	1,2	20	50.000	20	D	3	6	D	-A	
							M	0,8	2,2	20	50.000	20	A	3	6		S
							S	1,8	3,5	20	50.000	20	F	3	6		K
							W	3	5	20	50.000	20	B	3	15		K
HIGH ENERGY	P	HE	14X15	N	12	H	0,1	1,2	34	50.000	42	D	7	11	D	-A	
							M	0,8	2,2	32	50.000	38	A	7	11		S
				L	20	H	S	1,8	3,5	30	50.000	34	F	7	11		K
							W	3	5	28	50.000	30	B	7	20		K
ADJUSTABLE ENERGY	P	AE	14X15	N	12	H	0,1	5	34	50.000	34	D	7	11	D	-A	
												A	7	11	S		
				L	20							F	7	11	K		
												B	7	20	K		

► HOW TO ORDER CORRECTLY

P HE 14X15 L H A K -A



Product finder

- Calculate shock absorbers quicker
- Clearly arranged selection guide
- Smart solution – available on mobile devices

www.zimmer-group.de/en/pdti

Example order no.

PowerStop High Energy 14X15

- Stroke variant: long (L)
- Hardness degree: Hard (H)
- Protection: wiper (A)
- Head: plastic head (K)

PROTECTION

no protection D -A	Felt ring F -A	Wiper (NBR) A -A	Bellow (TPE) B -A
in a clean environment	against dust, chips, ...	against liquid, oil, ...	on request sealed

TECHNICAL DRAWINGS – STANDARD STROKE

N -A

	no head D -A	with steel head S -A	with plastic head K -A	with bellow and steel head B S -A	with bellow and plastic head B K -A
STANDARD ENERGY					
HIGH ENERGY					
ADJUSTABLE ENERGY					

TECHNICAL DRAWINGS – LONG STROKE

L -A

	no head D -A	with steel head S -A	with plastic head K -A
HIGH ENERGY			
ADJUSTABLE ENERGY			



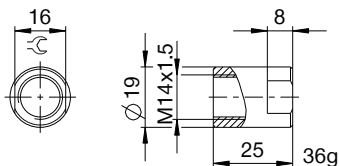
INDUSTRIAL SHOCK ABSORBERS POWERSTOP

THREAD M14X1.5

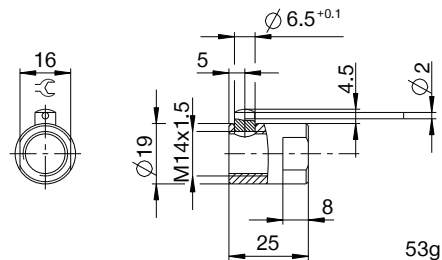
ACCESSORIES

Pos.	Order no.	Accessories	Remarks
①	PAH14X15-A	Stop sleeve	Including 1x PVM14X15-A
②	PSH14X15-A	Sensor stop sleeve	Query only possible via damper with steel or plastic head (except for bellows). Inductive sensor, PNP closer (NO), PUR cable 2 m, degree of protection IP65. For further information see separate data sheet.
③	PBV14X15NA-A	Side load adapter standard stroke Protection: wiper (NBR)	Impact angle max. 30°. Can only be used in combination with industrial shock absorbers without head. Locknut PVM20X15-A suitable for external thread of the side load adapter.
④	PBV14X15NF-A	Side load adapter standard stroke Protection: felt ring (felt)	Impact angle max. 30°. Can only be used in combination with industrial shock absorbers without head. Locknut PVM20X15-A suitable for external thread of the side load adapter.
⑤	PBV14X15LA-A	Side load adapter long stroke Protection: wiper (NBR)	Impact angle max. 30°. Can only be used in combination with industrial shock absorbers without head. Locknut PVM20X15-A suitable for external thread of the side load adapter.
⑥	PBV14X15LF-A	Side load adapter long stroke Protection: felt ring (felt)	Impact angle max. 30°. Can only be used in combination with industrial shock absorbers without head. Locknut PVM20X15-A suitable for external thread of the side load adapter.
⑦	PKS14X15-A	Clamping flange orthogonal screwed	Tightening torque of the screws max. 5 Nm.
⑧	PKP14X15-A	Clamping flange screwed in parallel	Tightening torque of the screws max. 5 Nm.
⑨	PVM14X15-A	Stainless steel locknut	Included with the industrial shock absorber.
⑩	PDD14X15-A	Pressure chamber seal	Recommended fixation with PVM14X15-A. Seal must be in full contact on both sides.

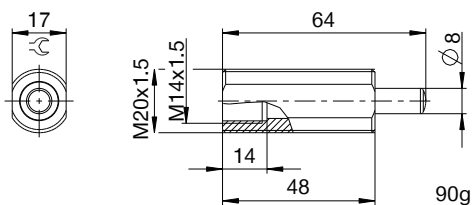
①



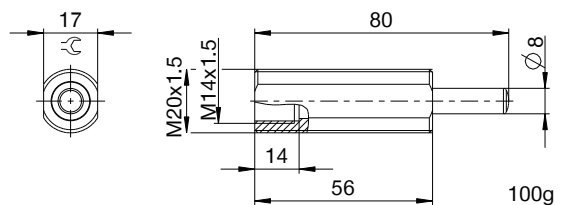
②



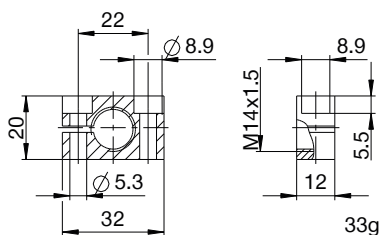
③ ④



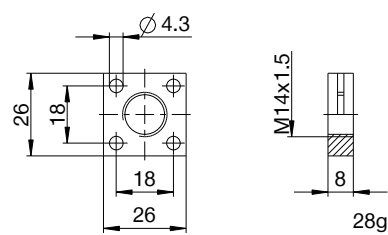
⑤ ⑥



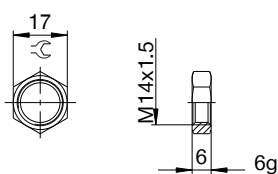
⑦



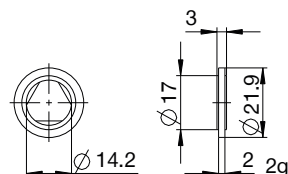
⑧



⑨



⑩



▶ CLASSIFICATION

P **HE** **14X15** **L** **H** **A** **K** **-A**

Design

P Industrial shock absorbers PowerStop

Series

ME Mini Energy

SE Standard Energy

HE High Energy

AE Adjustable Energy

Thread

14 Thread nominal diameter

X

15 Thread pitch (factor 10)

Stroke variant

N Standard stroke

L Long stroke

V Extra long stroke

Hardness degree

H Hard (0.1 - 1.2 m/s; Adjustable Energy: 0.1 - 5 m/s)

M Medium (0.8 - 2.2 m/s)

S Soft (1.8 - 3.5 m/s)

W Supersoft (3 - 5 m/s)

Protection

D no protection

F Felt ring

A Wiper (NBR)

B Bellow (TPE)

Head

D no head

S with steel head

K with plastic head

Version

-A Versioning from a to z